



# QM Polyclonal Antibody

<b>Catalog No</b>	YP-Ab-01965
<b>Isotype</b>	IgG
<b>Reactivity</b>	Human;Mouse;Rat;Cat
<b>Applications</b>	WB;IHC
<b>Gene Name</b>	RPL10
<b>Protein Name</b>	60S ribosomal protein L10
<b>Immunogen</b>	The antiserum was produced against synthesized peptide derived from human 60S Ribosomal Protein L10. AA range:1-50
<b>Specificity</b>	QM Polyclonal Antibody detects endogenous levels of QM protein.
<b>Formulation</b>	Liquid in PBS containing 50% glycerol, 0.5% BSA and 0.02% sodium azide.
<b>Source</b>	Polyclonal, Rabbit,IgG
<b>Purification</b>	The antibody was affinity-purified from rabbit antiserum by affinity-chromatography using epitope-specific immunogen.
<b>Dilution</b>	WB 1:500-2000;IHC-p 1:50-300
<b>Concentration</b>	1 mg/ml
<b>Purity</b>	≥90%
<b>Storage Stability</b>	-20°C/1 year
<b>Synonyms</b>	RPL10; DXS648E; QM; 60S ribosomal protein L10; Laminin receptor homolog; Protein QM; Tumor suppressor QM
<b>Observed Band</b>	25kD
<b>Cell Pathway</b>	endoplasmic reticulum,cytosol,ribosome,membrane,cytosolic large ribosomal subunit,
<b>Tissue Specificity</b>	Brain,Human lung,Mammary cancer,Mammary gland,Ovarian carcinoma,Pancreatic cancer,P
<b>Function</b>	developmental stage:Down-regulated during adipocyte, kidney, and heart differentiation.,disease:Defects in RPL10 may be the cause of susceptibility to X-linked autism [MIM:209850]. Autism is a pervasive developmental disorder (PDD), prototypically characterized by impairments in reciprocal social interaction and communication, restricted and stereotyped patterns of interests and activities, and the presence of developmental abnormalities by 3 years of age.,similarity:Belongs to the ribosomal protein L10e family.,
<b>Background</b>	This gene encodes a ribosomal protein that is a component of the 60S ribosome subunit. The related protein in chicken can bind to c-Jun and can repress c-Jun-mediated transcriptional activation. Some studies have detected an association between variation in this gene and autism spectrum disorders, though others do not detect this relationship. There are multiple pseudogenes of this gene dispersed throughout the genome. Alternative splicing results in multiple transcript



variants. [provided by RefSeq, Jan 2015],

#### matters needing attention

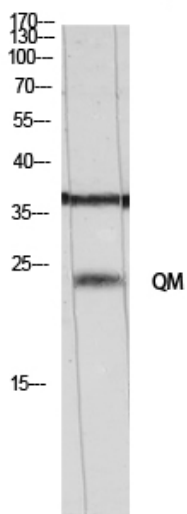
Avoid repeated freezing and thawing!

#### Usage suggestions

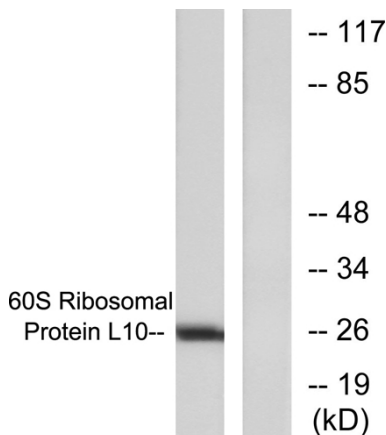
This product can be used in immunological reaction related experiments. For more information, please consult technical personnel.

### Products Images

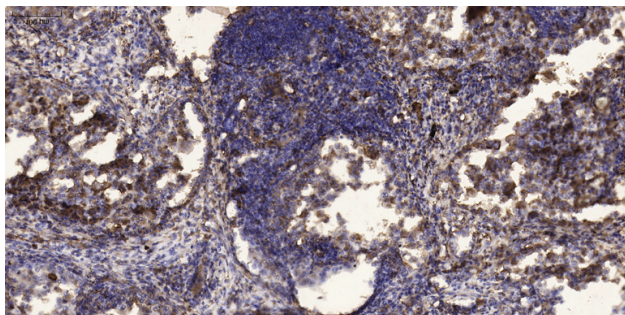
customer's (cat sample)



Western Blot analysis of customer's (cat sample) using QM Polyclonal Antibody diluted at 1:500



Western blot analysis of lysates from K562 cells, treated with Insulin 0.01u/ml 15min, using 60S Ribosomal Protein L10 Antibody. The lane on the right is blocked with the synthesized peptide.



Immunohistochemical analysis of paraffin-embedded human Squamous cell carcinoma of lung. 1, Antibody was diluted at 1:200(4° overnight). 2, Tris-EDTA,pH9.0 was used for antigen retrieval. 3,Secondary antibody was diluted at 1:200(room temperature, 45min).